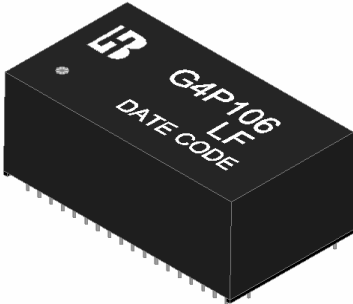


**1000 BASE –T QUAD PORT
MAGNETICS MODULES
P/N: G4P106 LF DATA SHEET**



Feature



- Designed for Ethernet 1000 BASE-T, full Quad port applications.
- Supports 16 pairs of category 5 UTP cable.
- Cable interface for isolation and low common mode emissions.
- Compliant with IEEE 802.3ab standard for 1000 BASE-T.
- Compliance with ROHS requirements.
- Operating temperature range: 0°C to +70°C.
- Storage temperature range: -25°C to +85°C.

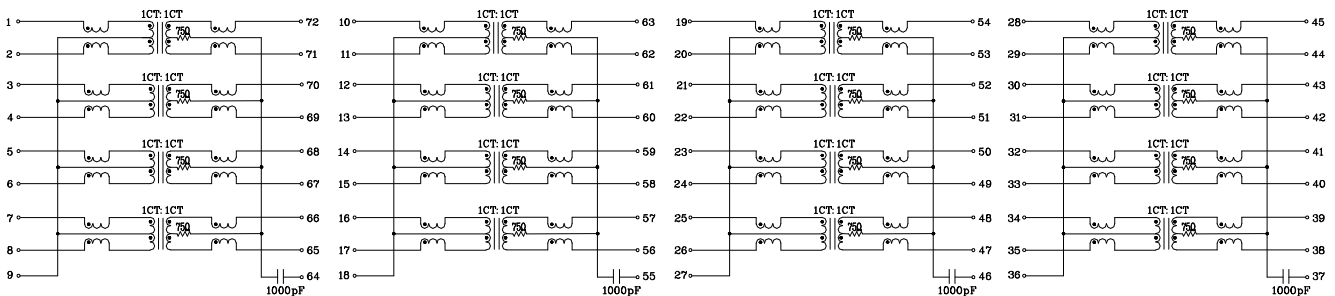
Electrical Specifications @ 25°C

| Part Number | Turns Ratio (±5%) | | OCL (uH Min) @100KHz/0.1V with 8mA DC Bias | Cross talk Attenuation (dB Min) | | | HI-POT (Vrms) |
|-------------|-------------------|---------|--|---------------------------------|-------|--------|---------------|
| | TX | RX | | 30MHz | 60MHz | 100MHz | |
| G4P106 LF | 1CT:1CT | 1CT:1CT | 350 | -40 | -35 | -30 | 1500 |

Continue

| Part Number | Insertion Loss (dB Max) | Return Loss (dB Min) @ Load 100Ω | | | | | DCMR (dB Min) | | |
|-------------|-------------------------|----------------------------------|---------|-------|-------|----------|---------------|-------|-------|
| | | 1-100MHz | 1-30MHz | 40MHz | 50MHz | 60-80MHz | 100MHz | 30MHz | 60MHz |
| G4P106 LF | -1.0 | -18 | -14.4 | -13.1 | -12 | -10 | -40 | -35 | -30 |

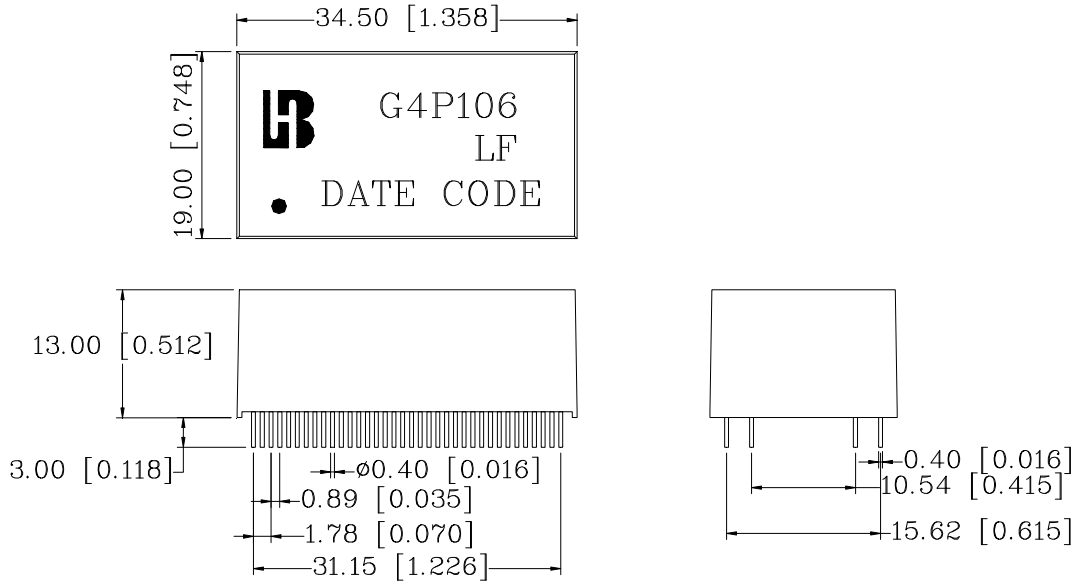
Schematic



**1000 BASE -T QUAD PORT
MAGNETICS MODULES
P/N: G4P106 LF DATA SHEET**

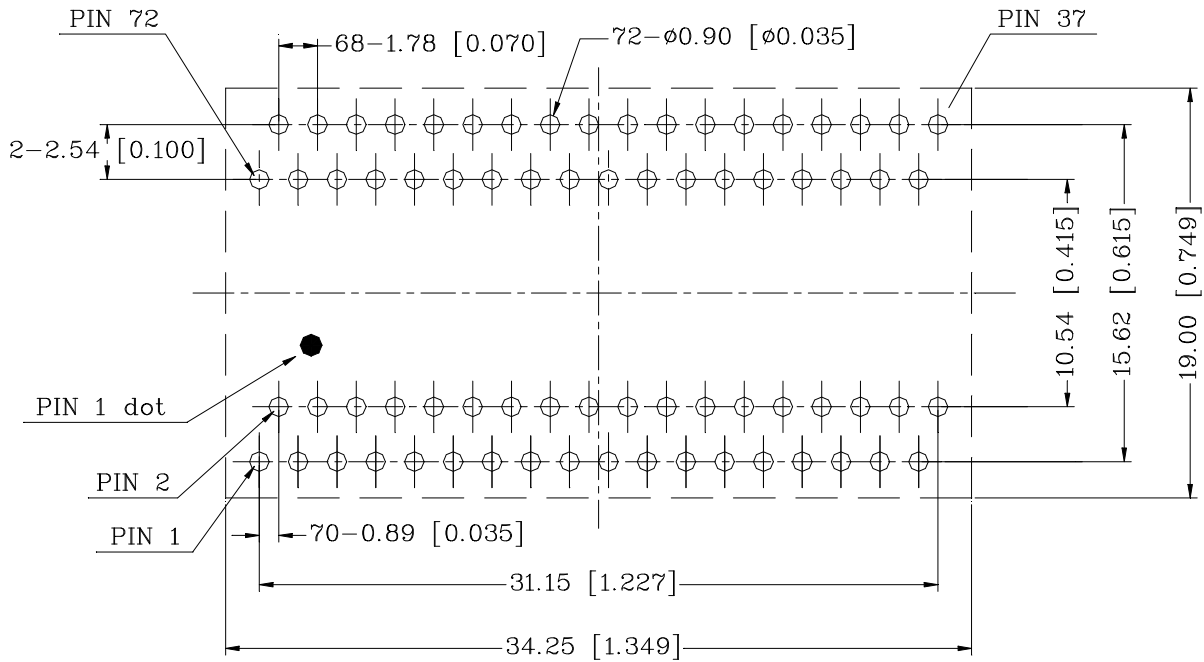


Mechanical



Units: mm[Inches] Tolerances: xx.x0 \pm 0.25[0.010]
0.xx \pm 0.05[0.002]

PCB Layout mounting Hole (Top View)



Units: mm[Inches] Tolerances: xx.x0 \pm 0.25[0.010]
0.xx \pm 0.05[0.002]